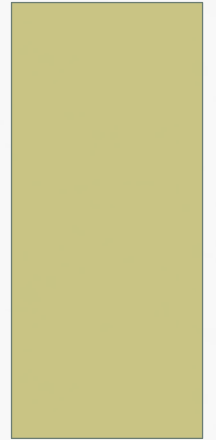


# INSTALLING LINUX WITHIN WINDOWS

WINDOWS 7 AND UBUNTU



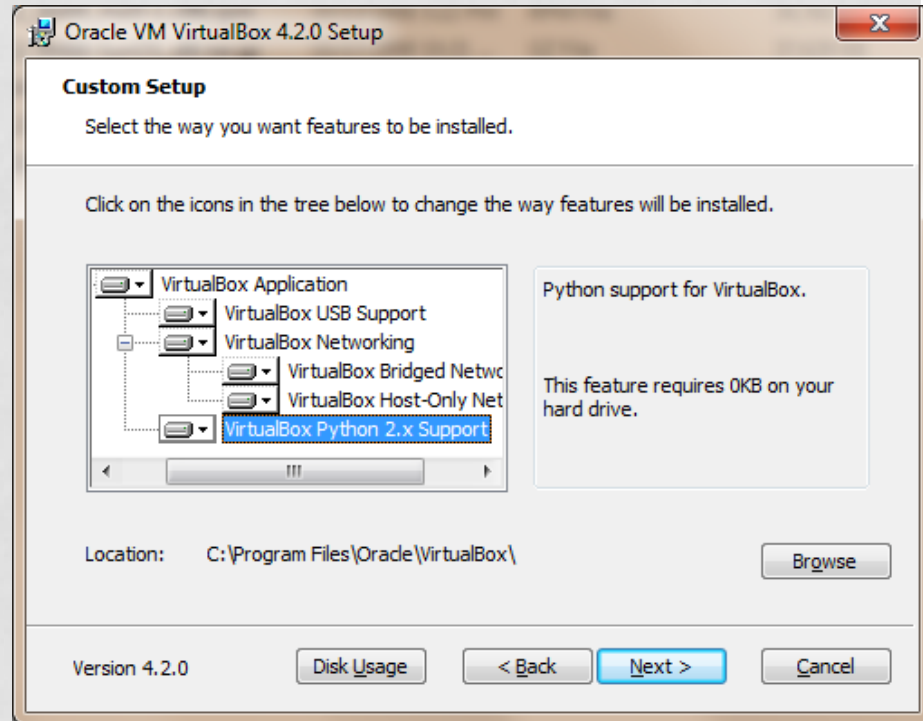
# INSTALLING A VIRTUAL MACHINE

- Will first install VirtualBox as hypervisor
- Base OS is Windows 7
- Guest OS will be Ubuntu 12.04

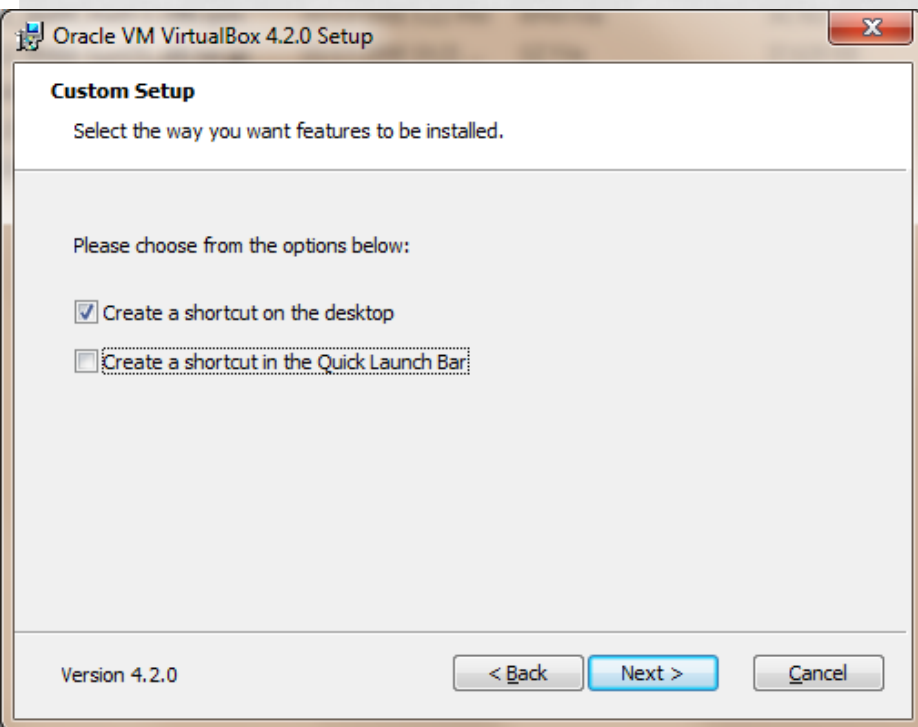
# DOWNLOAD FILES

- VirtualBox is available from :
  - <https://www.virtualbox.org/wiki/Downloads>
  - File is approximately 100 MB
- Ubuntu is available from:
  - <http://www.ubuntu.com/download/desktop>
  - CD file is approximately 698 MB
- Fedora is available from:
  - <http://fedoraproject.org/en/get-fedora-options#formats>
  - DVD file is approximately 4.4 GB

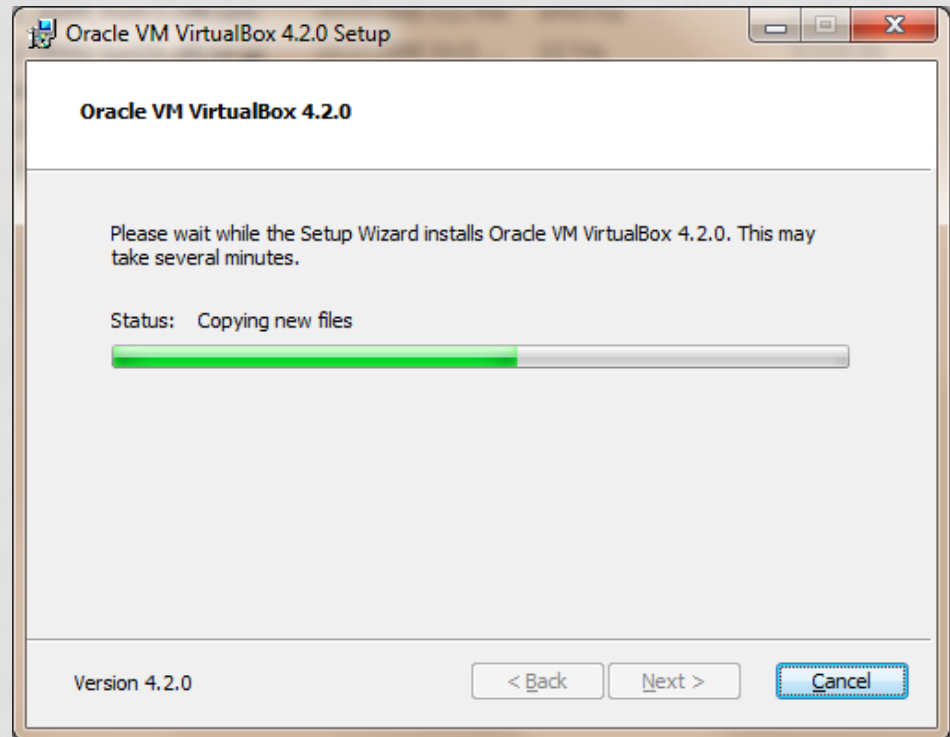
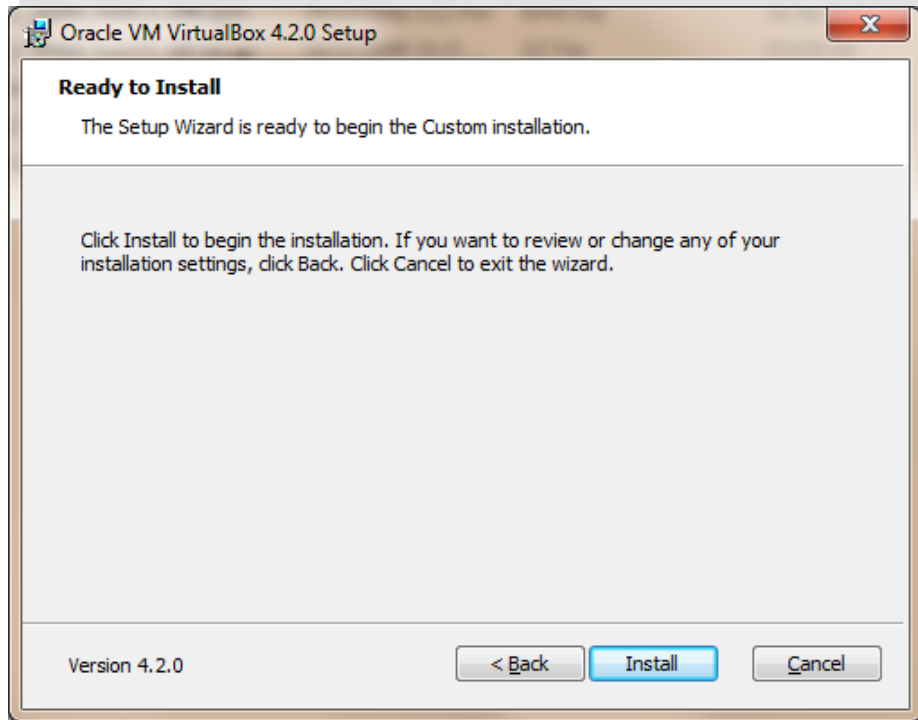
# INSTALLING VIRTUALBOX



# INSTALLING VIRTUALBOX



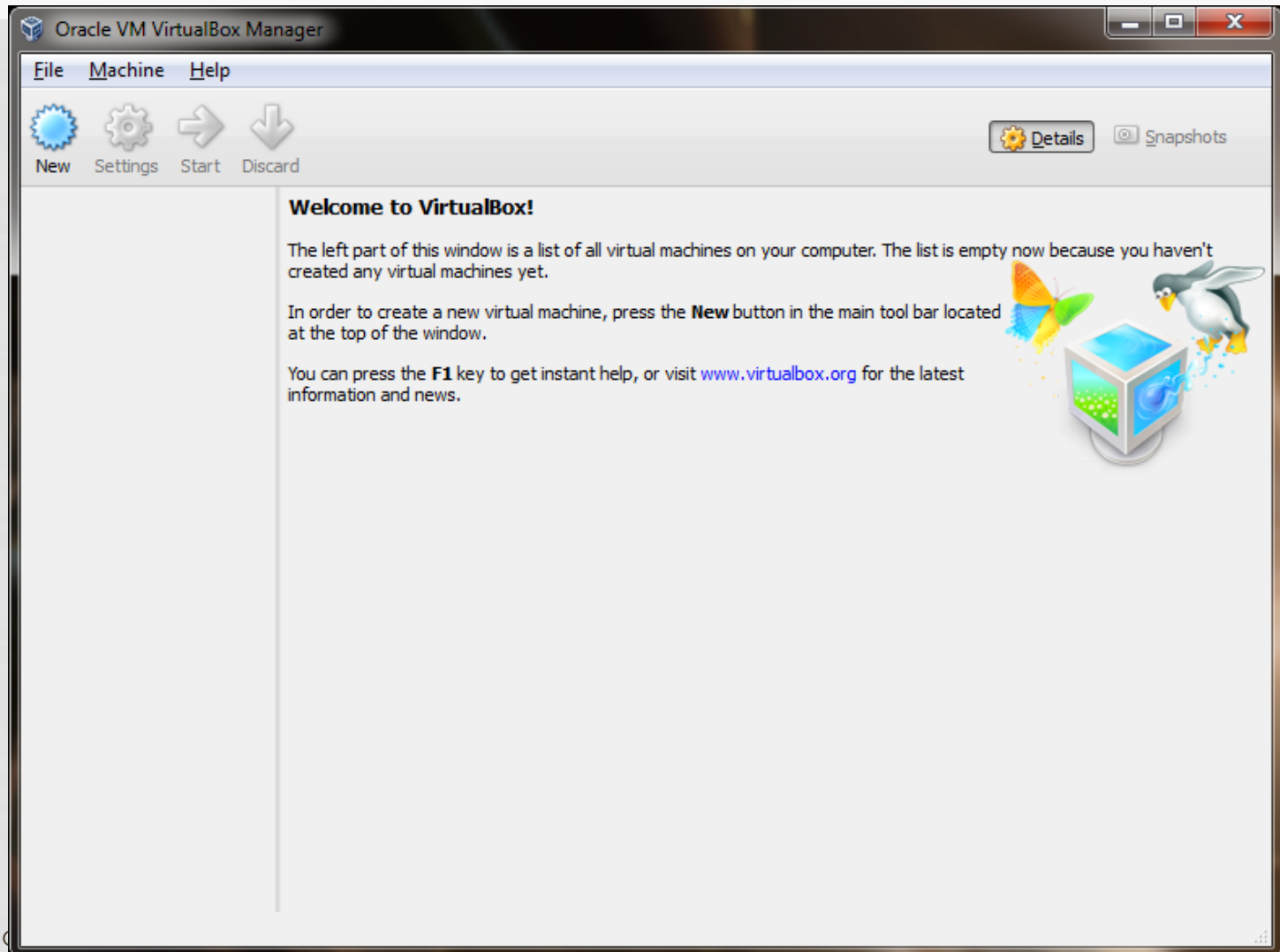
# INSTALLING VIRTUALBOX



# INSTALLING VIRTUALBOX



# INSTALLING UBUNTU VM






# INSTALLING UBUNTU VM

Create Virtual Machine

## Name and operating system

Please choose a descriptive name for the new virtual machine and select the type of operating system you intend to install on it. The name you choose will be used throughout VirtualBox to identify this machine.

Name:

Type:  

Version:

Create Virtual Machine

## Memory size

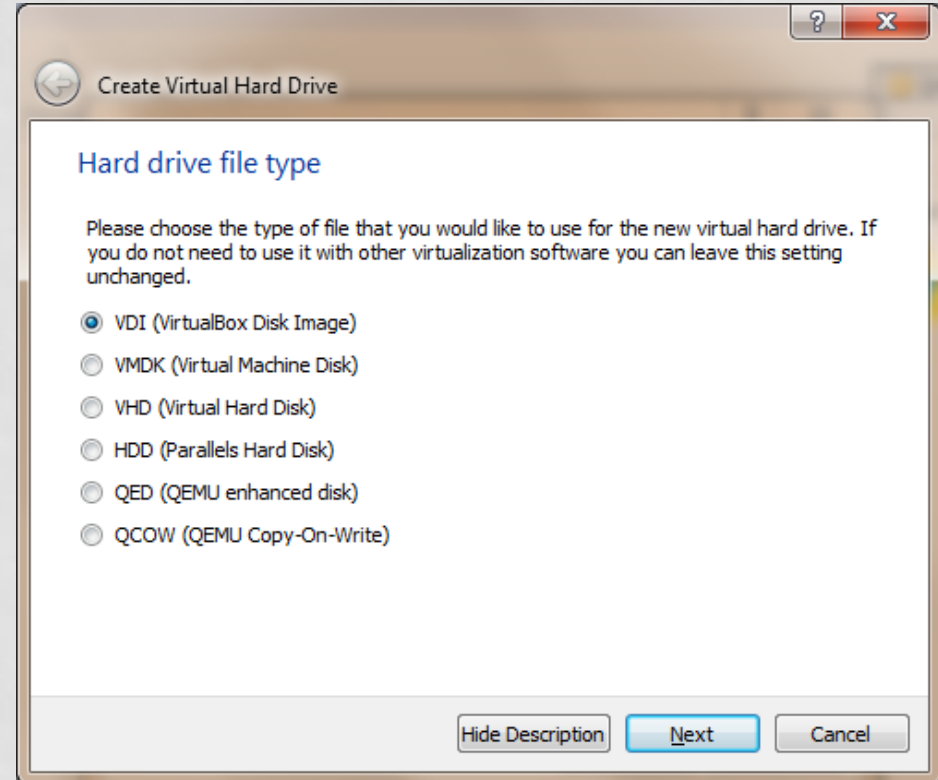
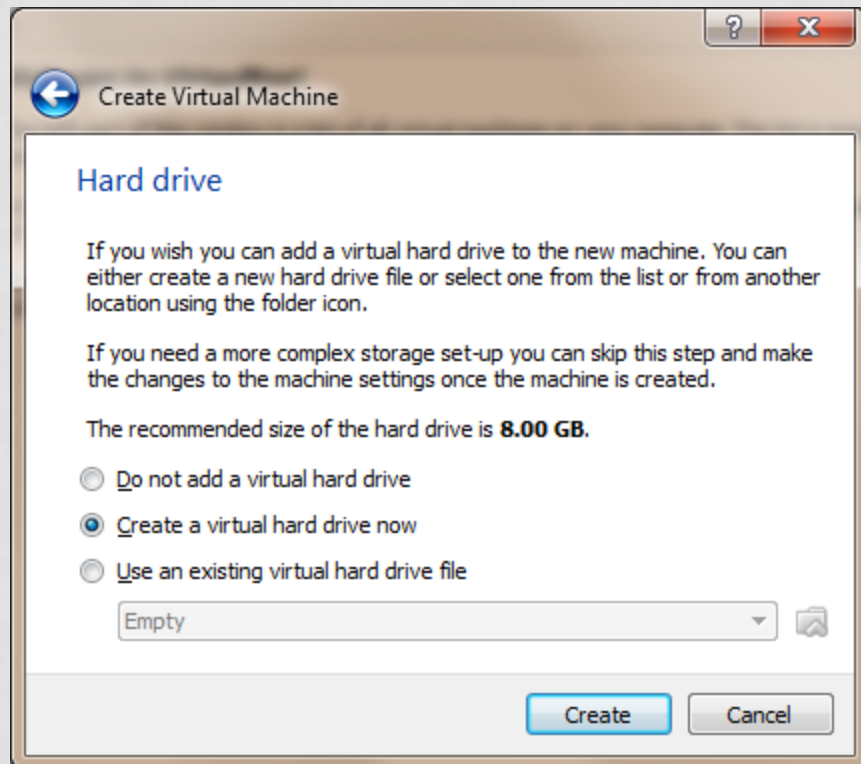
Select the amount of memory (RAM) in megabytes to be allocated to the virtual machine.

The recommended memory size is **512 MB**.

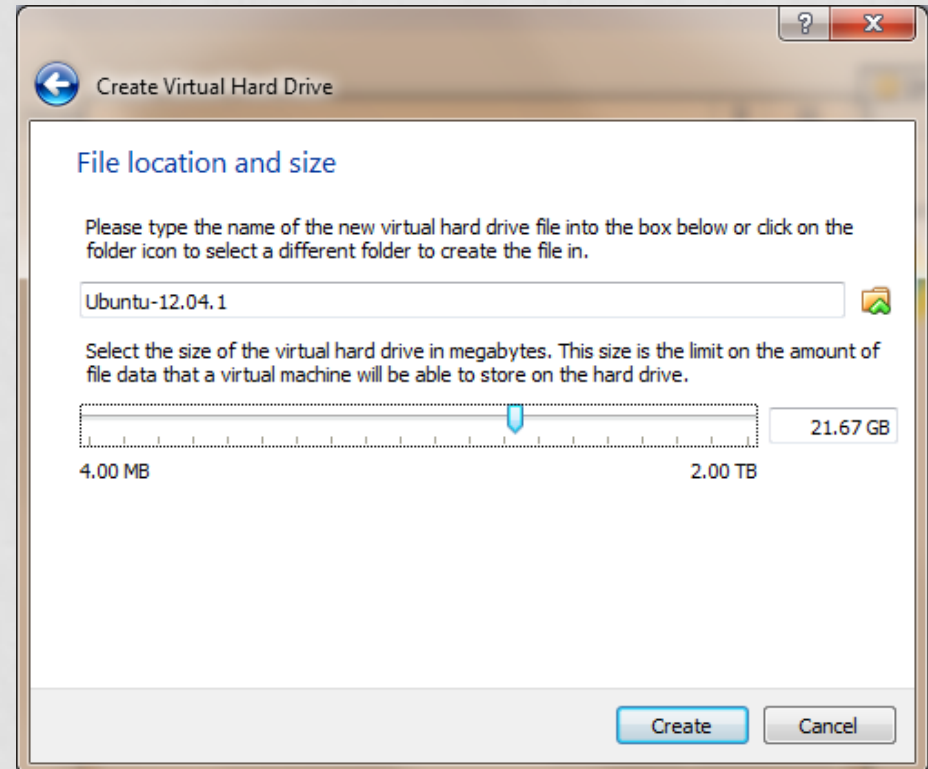
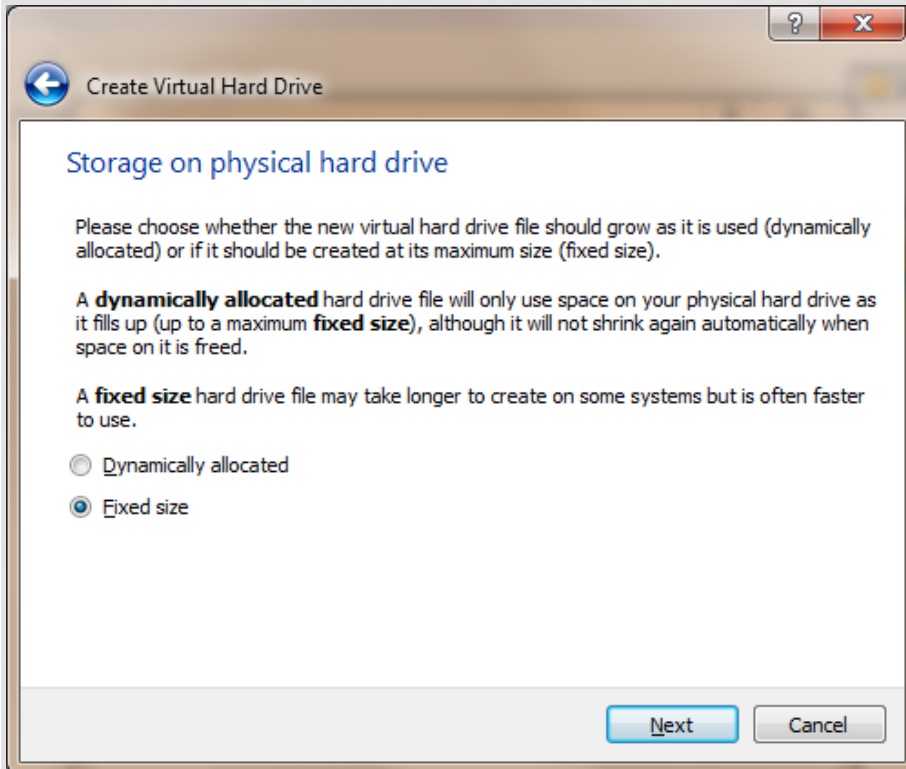
MB

4 MB 8192 MB

# INSTALLING UBUNTU VM



# INSTALLING UBUNTU VM



# INSTALLING UBUNTU VM

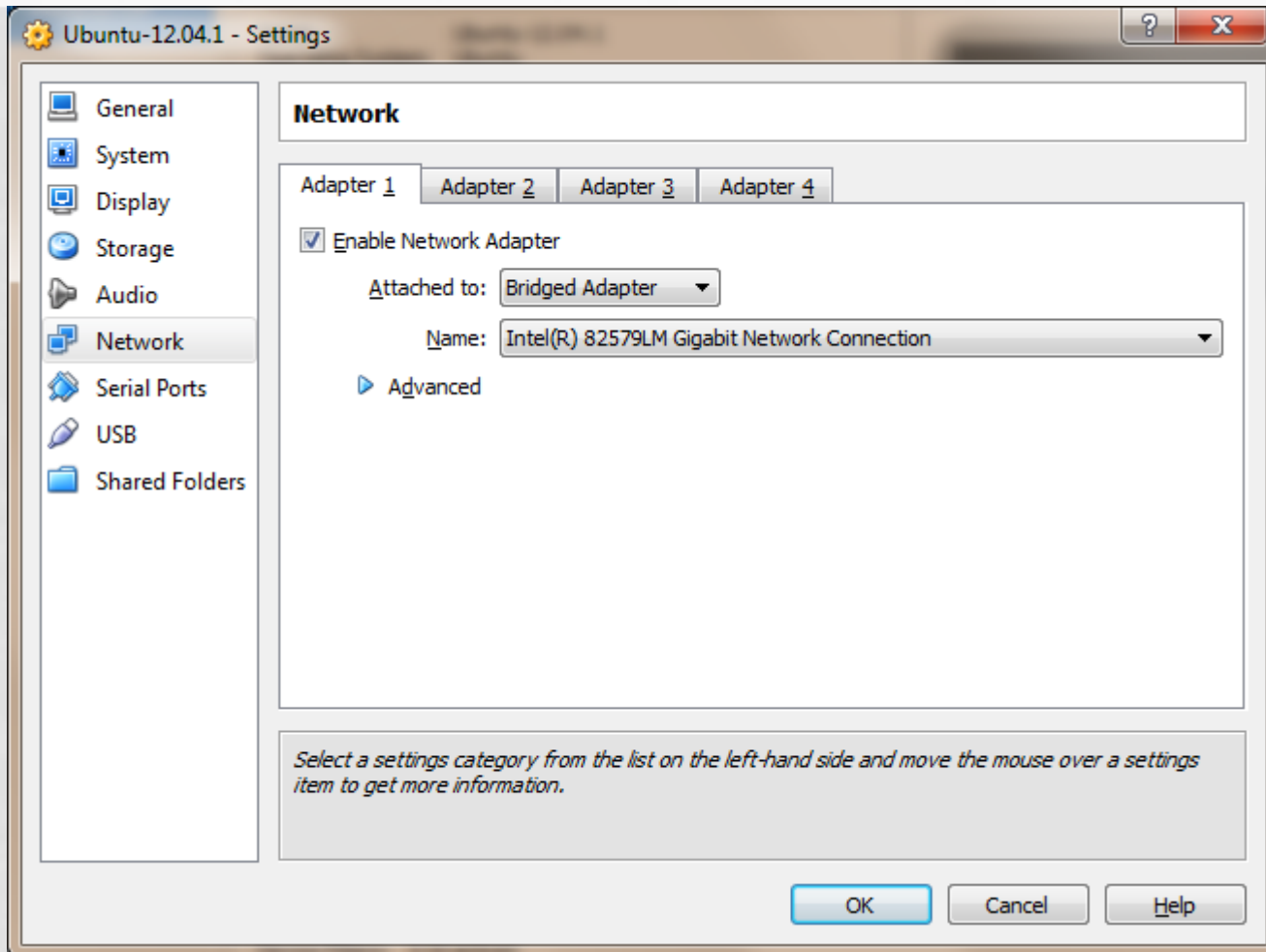
The screenshot displays the Oracle VM VirtualBox Manager interface. At the top, the title bar reads "Oracle VM VirtualBox Manager". Below it is a menu bar with "File", "Machine", and "Help". A toolbar contains icons for "New" (blue gear), "Settings" (orange gear), "Start" (green arrow), and "Discard" (grey arrow). On the right, there are "Details" and "Snapshots" buttons.

The main area shows a list of VMs on the left, with "Ubuntu-12.04.1" selected and its status "Powered Off" indicated. The right pane shows the configuration for this VM, organized into several sections:

- General:** Name: Ubuntu-12.04.1, Operating System: Ubuntu
- System:** Base Memory: 2048 MB, Boot Order: Floppy, CD/DVD-ROM, Hard Disk, Acceleration: VT-x/AMD-V, Nested Paging, PAE/NX
- Display:** Video Memory: 12 MB, Remote Desktop Server: Disabled
- Storage:** IDE Controller, IDE Secondary Master: [CD/DVD] Empty, SATA Controller, SATA Port 0: Ubuntu-12.04.1.vdi (Normal, 21.67 GB)
- Audio:** Host Driver: Windows DirectSound, Controller: ICH AC97
- Network:** Adapter 1: Intel PRO/1000 MT Desktop (NAT)
- USB:** Device Filters: 0 (0 active)
- Shared folders:** None
- Description:** None

A "Preview" window on the right shows a black screen with the text "Ubuntu-12.04.1" in white.

# INSTALLING UBUNTU VM



# INSTALLING UBUNTU VM

